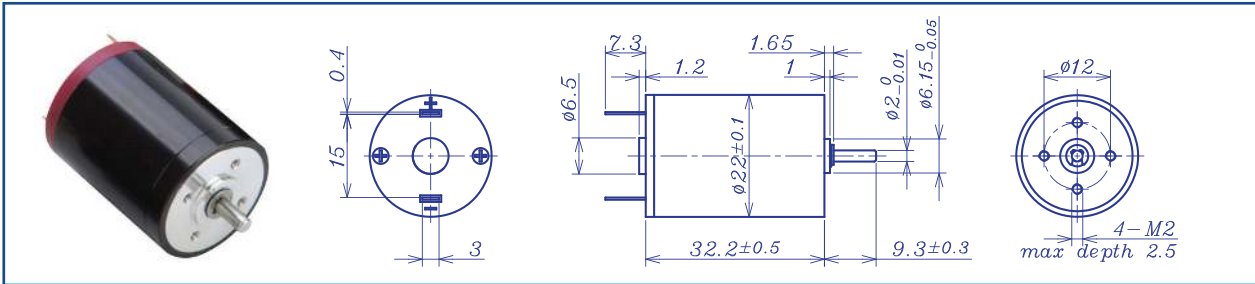


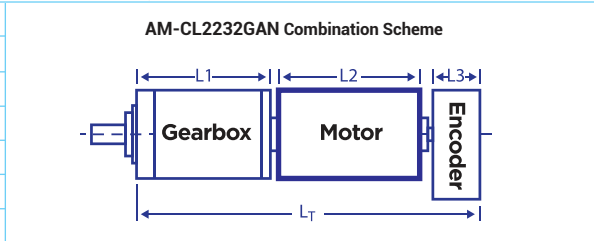
AM-CL2232GAN SERIES



Motor Model	Graphite brush			Ball Bearings				
		0609	0606	1209	1206	2409	2406	
Nominal voltage	V	6	6	12	12	24	24	
No load speed ±12%	rpm	8622	6285	8638	5735	9183	6132	
No load current Max 150%	mA	87	51	45	25	36	19	
Recommend limit for continuous operating	Max cont. torque	mN.m	5.0	6.7	7.3	8.4	7.3	8.5
	Rated Speed	rpm	7735	5093	7385	4229	7988	4627
	Rated Current	mA	850	800	600	450	320	250
	Rated Power	W	4.1	3.6	5.6	3.7	6.1	4.1
Starting current	mA	7500	4000	3871	1644	2286	960	
Stall torque	mN.m	49	36	50	32	56	34	
Maximum power output	W	11.0	5.8	11.3	4.8	13.4	5.5	
Maximum Efficiency	%	80	79	80	77	80	74	
Terminal resistance ±12%	Ω	0.8	1.5	3.1	7.3	10.5	25.0	
Inductance (1KH ₂)	mH	0.36	0.09	0.23	0.44	0.70	1.5	
Mechanical time constant	ms	9.5	9.5	9.3	9.7	8.9	9.6	
Moment of inertia	gcm ²	5.15	5.13	5.15	5.15	5.15	5.14	
Torque constant	mN.m/A	6.6	9.0	13.1	19.7	24.7	36.6	
Speed constant	rpm/V	1454	1061	728	485	387	261	
Speed/torque gradient	rpm/mN.m	177.1	176.8	172.2	180.0	164.7	177.9	
Weight	g	57.0	57.1	56.5	57.0	56.8	57.0	

ADDITIONAL INFORMATION			
Motor thermal resistance:	24.5K/W	Motor thermal time constant:	685S
Axial (dynamic):	5.9 N	Radial (5mm from mounting face):	8.0 N
Press-fit force (static):	16(90) N	Max allowable screw depth into flange:	2.5 mm
Maximum radial play (5mm from mounting face):	≤0.02 mm	Axial play:	Preset
Maximum winding temperature:	85°C	Ambient temperature range:	-30 to 65°C
Standard rear shaft diameter:	2 mm	Standard rear shaft length "L":	0/3.7 mm

Total Length (Gearbox and Motor): L _T =L ₁ +L ₂ +L ₃				
L1:20GP	L1:24GP		L2:CL22	L3:EN225
18.8	22.2		32.2	10.7
23.6	27.4			
28.4	32.6			



Remarks: Client can choose gearbox and encoder to match with this motor. Some combinations are listed here for reference.

Recommended Gearbox:
Planetary Gearbox:
AM-20GP
AM-24GP

Recommended Encoder:
Encoder S: AM-EN2211S***
2~3 Channels

For more combination specs, visit Assun Motor website.

Motor data tested at 25°C. Motor operation exceeding continuous limits will reduce life or result in damage.
At elevated ambient temperatures, load current must be reduced.

Download datasheet: <https://assunmotor.com/documents-download>

Visit Our Website and Online Shop at <https://assunmotor.com> Contact: info@assunmotor.com