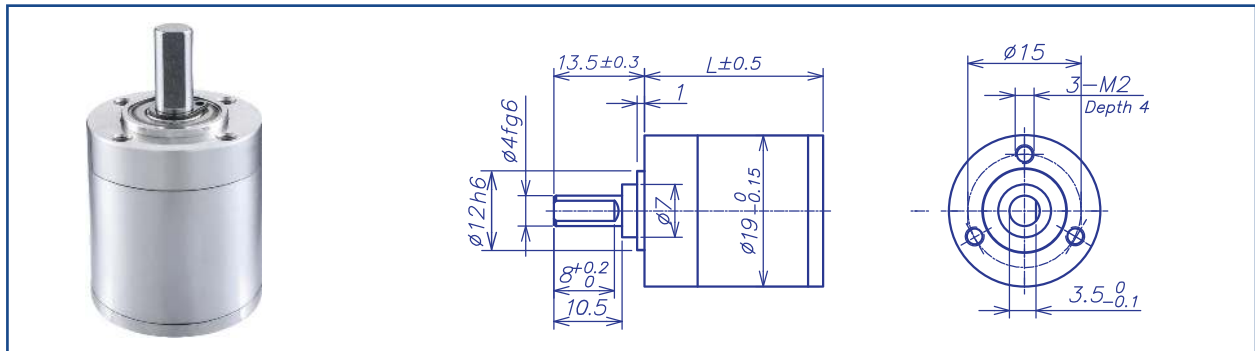


## AM-19GP Series

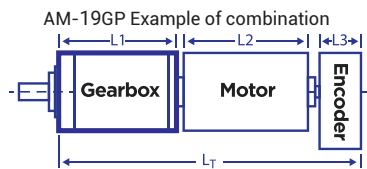


### GEARBOX CHARACTER

Gear type	Straight teeth	Radial Play (8mm from flange)	max 0.1mm
Output shaft	Stainless steel hardened	Permissible force press fits	max. 100 N
Main gear	Alloy steel hardened	Permissible axial load (dynamic)	max. 50N
Ring gear	Stainless steel hardened	Recommended inut speed	8000RPM
Adapter plate	Stainless steel	Operating temperature range	-40°C ~ +100°C
Bearing AT output	Ball bearing	Operating humidity range	10-90%RH
Axial play	0-0.3	Number of stages	1    2    3    4
Directions	CW/CCW	Permissible load (8mm from flange)	40N   60N   60N   60N

### GEARBOX DATA

Number of stage	1			2		3			4			
	Reduction ratio X:1	3.8	4.4	5.4	14	19	53	109	84	128	198	316
Reduction ratio absolute	15/4	57/13	27/5	225/16	3249/169	3375/64	185193/2197	41551/325	50625/256	2777895/8788	10556001/28561	
				855/52	1539/65	12825/208			192375/832	263169/676	5000211/10985	
				81/4	729/25	48735/676	87723/845	19683/125	731025/2704	124659/260	2368521/4225	
						1215/16			18225/64	59049/100	1121931/1625	
						4617/52			2777895/8788		531441/625	
Motor shaft max. diametre (mm)	3	2		3	2	3		2		3		2
Gearbox length "L" (mm)	18.8			23.6		28.4			33.2			
Max. continuous torque (N.m)	0.2			0.3		0.5			0.6			
Max. intermittent torque (N.m)	0.3			0.45		0.75			0.9			
Average backlash no load	1.2°			1.4°		1.4°			1.4°			
Gearbox efficiency	90%			81%		73%			65%			
Max. mass inertia (g.cm <sup>2</sup> )	0.1			0.1		0.1			0.1			
Gearbox weight approx (g)	35			45		55			65			
gearbox model	AM-19GPA-X			AM-19GPB-X		AM-19GPC-X			AM-19GPD-X			



#### Recommend Motor:

Coreless Motor (w/E):	Brushless Motor (w/E):
AM-CL1623MAN	AM-BL1632AN
AM-CL1626MAN	AM-BL1640AN
AM-CL1633MAN	AM-BL2032AN
AM-CL1643MAN	AM-BL2040AN
AM-CL2232GAN	AM-BL2051AN
AM-CL2232MAN	
AM-CL2242GAN	
AM-CL2242MAN	
AM-CL1934GAE	

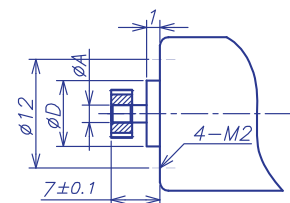
#### Recommend Encoder:

Suitable for Coreless Motor
Encoder S: AM-EN1611S***
AM-EN2211S***
Suitable for Brushless Motor
Encoder S: AM-EN1611S***
Encoder T: AM-EN1612T***

### INPUT GEARBOX DATA

Modulus	0.35		
Press angle	20°		
Teeth number	10	13	16
Max gear hole "A"	2	2	3
Max motor shaft	2	2	3
Motor dimension "D"	5	5.5	6.5

### MOTOR DIMENSION



### GEARBOX MOTOR LENGTH "LT"

Gear motor length LT	55.5	74.3	80.4
Gearbox length L1	18.8	23.6	28.4
Motor length L2	26	40	40
Encoder length L3	10.7	10.7	12

Download datasheet: <https://assunmotor.com/documents-download>

Visit Our Website and Online Shop at <https://assunmotor.com> Contact: [info@assunmotor.com](mailto:info@assunmotor.com)