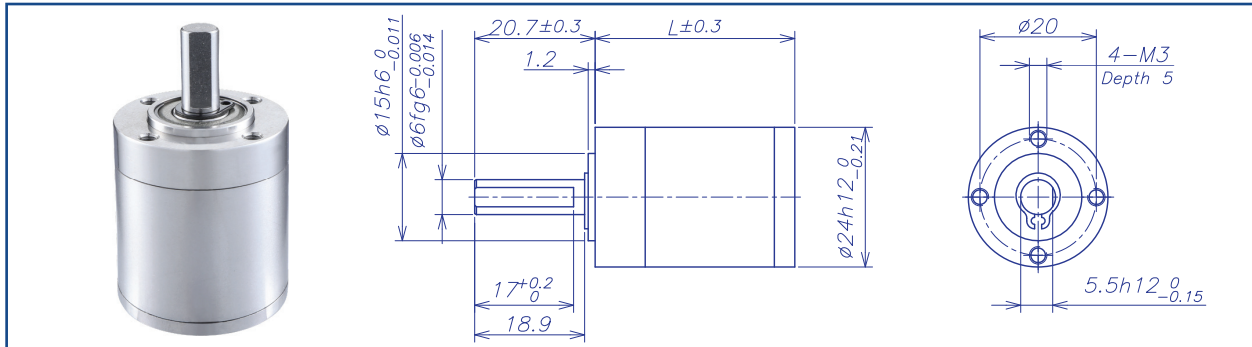


## AM-24GP Series

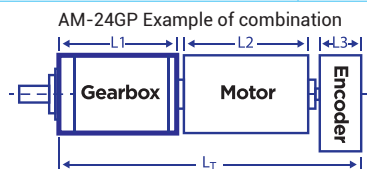


### GEARBOX CHARACTER

Gear type	Straight teeth	Radial Play (10mm from flange)	max 0.1mm
Output shaft	Stainless steel hardened	Permissible force press fits	max. 120 N
Main gear	Alloy steel hardened	Permissible axial load (dynamic)	max. 100N
Ring gear	Stainless steel hardened	Recommended inut speed	10000RPM
Adapter plate	Stainless steel	Operating temperature range	-40°C ~ +100°C
Bearing AT output	Ball bearing	Operating humidity range	10-90%RH
Axial play	0-0.3	Number of stages	1    2    3    4
Directions	CW/CCW	Permissible load (12mm from flange)	95N   110N   120N   120N

### GEARBOX DATA

Number of stage	1			2		3			4		
Reduction ratio X:1	3.7	4.3	6.0	13 16 19 22 26	36	49 58 69 81 95	113 132 156	216	181 214 252 298 353 413	488 572 676	792 936 1296
Reduction ratio absolute	11/3	13/3	6/1	121/9 143/9 169/9 22/1 26/1	36/1	1331/27 1573/27 1859/27 2197/27 286/3	338/3 132/1 156/1 216/1	216/1	14641/81 17303/81 20449/81 24167/81 28561/81 3718/9	4394/9 572/1 676/1	792/1 936/1 1296/1
Motor shaft max. diametre (mm)	4	2		4	2		4	2		4	2
Gearbox lenght "L" (mm)	24			34.3		42.8			51.3		
Max. continuous torque (N.m)	1			2.25		4.5			4.5		
Max. intermittent torque (N.m)	1.5			3.4		6			6		
Average backlash no load	1.2°			1.4°		1.5°			1.5°		
Gearbox efficiency	90%			81%		73%			65%		
Max. mass inertia (g.cm <sup>2</sup> )	0.58			0.58		0.58			0.58		
Gearbox weight approx (g)	80			110		140			170		
gearbox model	AM-24GPA-X			AM-24GPB-X		AM-24GPC-X			AM-24GPD-X		



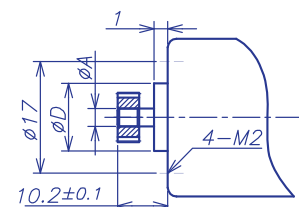
**Recommend Motor:**  
Coreless Motor (w/E)    Brushless Motor (w/E)  
AM-CL2232GAN    AM-BL2032AN  
AM-CL2232MAN    AM-BL2040AN  
AM-CL2242GAN    AM-BL2051AN  
AM-CL2242MAN    AM-BL2453AN  
AM-CL2532MAN  
AM-CL2545MAN

**Recommend Encoder:**  
Suitable for Coreless Motor  
Encoder S: AM-EN1611S\*\*\*  
Encoder S: AM-EN2211S\*\*\*  
Suitable for Brushless Motor  
Encoder S: AM-EN1611S\*\*\*  
Encoder T: AM-EN2412T\*\*\*

### INPUT GEARBOX DATA

Modulus	0.5		
Press angle	20°		
Teeth number	8	12	15
Max gear hole "A"	2.5	4	4
Max motor shaft	2.5	4	4
Motor dimension "D"	6	8	8.5

### MOTOR DIMENSION



### GEARBOX MOTOR LENGTH "LT"

Gear motor length $L_T$	87	110.5	108.3
Gear box length $L_1$	34.3	42.8	51.3
Motor length $L_2$	42	57	45
Encoder length $L_3$	10.7	10.7	12

Download datasheet: <https://assunmotor.com/documents-download>

Visit Our Website and Online Shop at <https://assunmotor.com> Contact: [info@assunmotor.com](mailto:info@assunmotor.com)