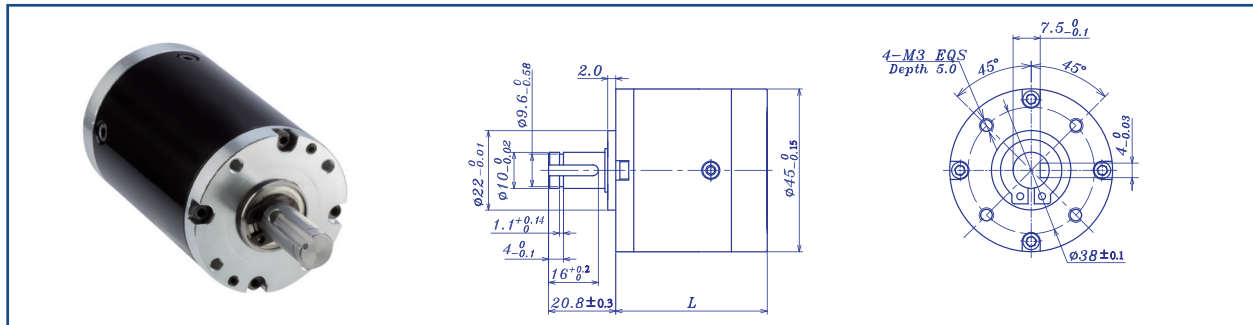


## AM-45P Series

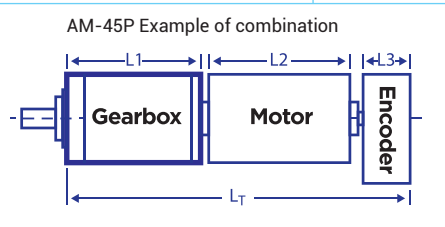


### GEARBOX CHARACTER

Gear type	Straight teeth	Average backlash on load	≤1.5°
Output shaft	Stainless steel hardened	Radial Play	≤0.06
Main gear	Alloy Steel	Permissible axial load	≤150N
Ring gear	Steel	Permissible force press fits	≤280N (5mm from mounting face)
Adapter plate	Aluminium alloy	Recommended input speed	≤8000RPM
Bearing AT output	Ball bearing	Operating temperature range	-20°C ~ +100°C
Axial play	0-0.3	Operating humidity range	10-90%RH
Directions	CW/CCW		

### GEARBOX DATA

Number of stage	1	2	3	4	
Reduction ratio X:1	3.4 3.8 4.3 5.1 6.3	12 22 13 26 14 32 16 40 19	40 83 162 44 98 171 50 111 202 66 131 75 150	224 399 649 1270 255 421 738 283 446 824 322 513 948 358 570 1078	
Reduction ratio absolute	75/22 72/19 69/16 66/13 63/10	5625/484 2700/209 5814/361 621/38 4761/256	2277/104 4356/169 2079/65 3969/100	421875/10648 75141/676 101250/2299 287496/2197 388125/7744 71441/475 16200/247 137214/845 15525/208 273861/1600 20493/247 130977/650 313632/3211	607500/2717 107163/209 1164375/4576 5143824/9025 139725/494 2464749/3800 1071225/3328 18896409/25600 1414017/3952 9056124/10985 4499145/11264 2250423/2375 1352538/3211 17253243/16000 980100/2197 8251551/6500
Gearbox length "L" (mm)	38.9	49.7	60.5	71.3	
Max. continuous torque (N.m)	5.4	7.2	9	10.8	
Max. intermitten torque (N.m)	7.9	10.6	13.2	15.9	
Gearbox efficiency	90%	81%	72%	65%	
Moment of inertia range (g.cm <sup>2</sup> )	12	14	14	15	
Gearbox weight approx (g)	305	418	520	633	
Gearbox model	AM-45PA-X-01	AM-45PB-X-01	AM-45PC-X-01	AM-45PD-X-01	



#### Recommend Motor:

Coreless Motor: (w/E)  
AM-CL3570GAN  
AM-CL4071GAE

Brushless Motor (w/E)  
AM-BL3660AN  
AM-BL45100AN

#### Recommend Encoder:

Suitable for Coreless Motor

Encoder S: AM-EN2211S\*\*\*

Encoder T: AM-EN2412T\*\*\*

Suitable for Brushless Motor

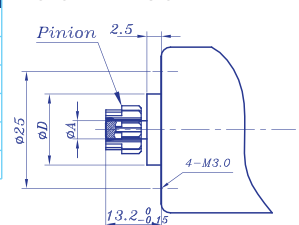
Encoder S: AM-EN2211S\*\*\*

Encoder T: AM-EN3612T\*\*\*

### INPUT GEARBOX DATA

Modulus	0.6				
Press angle	20°				
Teeth number	10	13	16	19	22
Max gear hole "A"	2.5	5.0	6.0	8.0	
Max motor shaft	2.5	5.0	6.0	8.0	
Motor dimension "D"	13.0			16.0	

### MOTOR DIMENSION



### GEARBOX MOTOR LENGTH "LT"

Gear motor length L <sub>T</sub>	119.6	121.7	172.5
Gearbox length L <sub>1</sub>	38.9	49.7	60.5
Motor length L <sub>2</sub>	70	60	100
Encoder length L <sub>3</sub>	10.7	12	12

Download datasheet: <https://assunmotor.com/documents-download>

Visit Our Website and Online Shop at <https://assunmotor.com> Contact: [info@assunmotor.com](mailto:info@assunmotor.com)