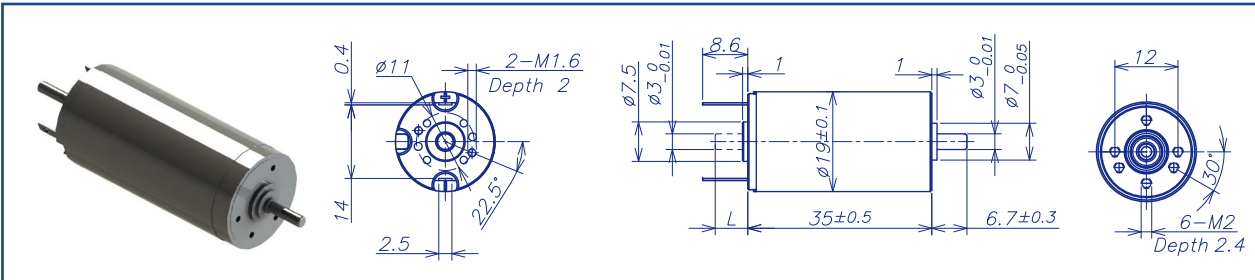


AM-CL1935MAE Series

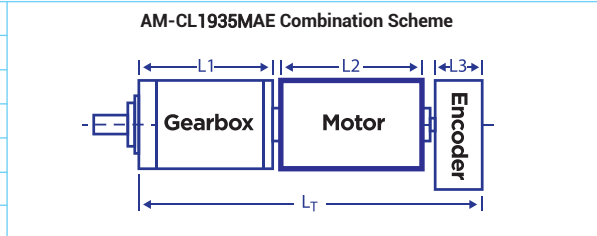


		Precious metal brush		Ball bearings				
Motor Model			0506	0607	0907	1206	1807	2406
Nominal voltage		V	4.5	6	9	12	18	24
No load speed ±12%		rpm	5900	6620	6600	6480	6600	6450
No load current Max 150%		mA	60	51	34	26	18	12.5
Recommend limit for continuous operating	Max cont. torque	mN.m	8.9	10.7	11.2	11.1	11.1	11.2
	Rated speed	rpm	4502	4949	4835	4749	4911	4725
	Rated current	mA	1300	1300	900	660	450	330
	Rated power	W	4.2	5.5	5.7	5.5	5.7	5.5
Starting current		mA	5294	5000	3273	2400	1706	1200
Stall torque		mN.m	38	42	42	42	44	42
Maximum power output		W	5.8	7.3	7.2	7	7.5	7.1
Maximum efficiency		%	80	81	81	80	81	81
Terminal resistance ±12%		Ω	0.85	1.2	2.75	5	10.55	20
Inductance (1KHZ)		mH	Null	0.11	Null	Null	Null	1.86
Mechanical time constant		ms	5.4	5.4	5.5	5.4	5.2	5.3
Moment of inertia		gcm ²	3.3	3.3	3.3	3.3	3.3	3.3
Torque constant		mN.m/A	7.2	8.6	12.9	17.5	25.8	35.2
Speed constant		rpm/V	1326	1115	741	546	371	272
Speed/torque gradient		rpm/mN.m	156.5	156.1	158.1	156	151.7	154.5
Weight		g	53	53	53	53	53	53

ADDITIONAL INFORMATION

Motor thermal resistance:	19.5 K/W	Motor thermal time constant:	643 S
Axial (dynamic):	2.5N	Radial (5mm from mounting face):	16.0 N
Press-fit force (static):	16(90)N	Max allowable screw depth into flange:	2.4 mm
Maximum radial play (5mm from mounting face):	≤0.02 mm	Axial play:	Preset
Maximum winding temperature:	125°C	Ambient temperature range:	-40 to 85 °C

Total Length (Gearbox and Motor): L _T =L ₁ +L ₂ +L ₃			
L1:19GP	L1:24GP	L2:CL19	L3: EN16S
18.8	24	35.0	10.7
23.6	34.3		L3: EN16T
28.4	42.8		12
33.2	51.3		



Remarks: Client can choose gearbox and encoder to match with this motor. Some combinations are listed here for reference.

Recommended Gearbox:
Planetary Gearbox:
AM-19GP
AM-24GP

Recommended Encoder:
Encoder S: AM-EN1611S***
3 Channels
Encoder T: AM-EN1612T***
3 Channels

For more combination specs, visit Assun Motor website.

Motor data tested at 25°C. Motor operation exceeding continuous limits will reduce life or result in damage.
At elevated ambient temperatures, load current must be reduced.

Download datasheet: <https://assunmotor.com/documents-download>

Visit Our Website and Online Shop at <https://assunmotor.com> Contact: info@assunmotor.com