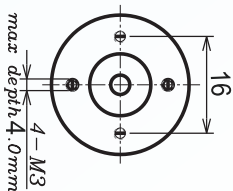
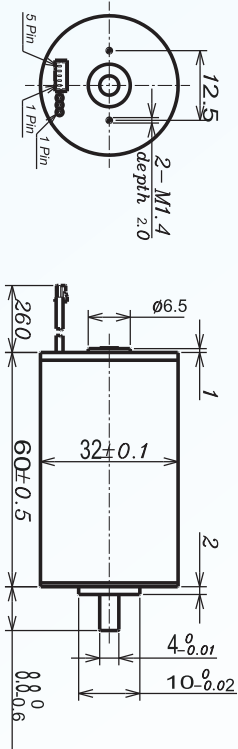




DC Brushless Motor AM-BL3260A/B-4P Series

ASSUN MOTOR

2015 edition. Specifications are subject to change without notice.



BRUSHLESS MOTOR BALL BEARING

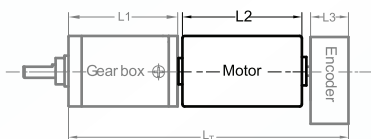
MOTOR MODEL		1208	1207	2409	2407	3609	3607
NOMINAL VOLTAGE	V	12	12	24	24	36	36
NO LOAD SPEED ±12%	rpm	8244	6870	9160	7495	8833	7274
NO LOAD CURRENT Max 150%	mA	400	300	210	180	150	140
Recommend Limit for Continuous Operating	mN.m	119.54	121.76	114.84	116.82	110.92	116.26
	rpm	7378	6000	8372	6708	8104	6523
	A	9.00	7.60	4.80	4.00	3.00	2.6
	W	92.36	76.50	100.69	82.05	94.14	79.41
STARTING CURRENT	mA	85714	60000	55814	38095	36364	25175
STALL TORQUE	mN.m	1191	1001	1396	1165	1415	1190
MAXIMUM POWER OUTPUT	W	257.1	180.0	334.9	228.6	327.3	226.6
MAXIMUM EFFICIENCY	%	87	86	88	87	88	86
TERMINAL RESISTANCE PHASE TO PHASE ±12%	Ω	0.14	0.20	0.43	0.63	0.99	1.43
MECHANICAL TIME CONSTANT	ms	1.11	1.10	1.05	1.03	1.00	0.98
MOMENT OF INERTIA	gcm ²	15.3	15.3	15.3	15.3	15.3	15.3
TORQUE CONSTANT	mN.m/A	13.9	16.68	25.02	30.58	38.92	47.26
SPEED CONSTANT	rpm/V	687	572	382	312	245	202
SPEED/TORQUE GRADIENT	rpm/mN.m	6.9	6.9	6.6	6.4	6.2	6.1
WEIGHT	g	240	240	240	240	240	240

ADDITIONAL INFORMATION

MAXIMUM ROLLING BEARING LOADS

AXIAL (DYNAMIX)	6 N	RADIAL (5MM FROM HEAD FACE)	28 N
PRESS-FIT FORCE	110 N	L: MAX ALLOWABLE SCREW DEPTH INTO FLANGE	4.0 mm
MAXIMUM RADIAL PLAY	≤0.02mm	AXIAL PLAY:	0 (<6.0N)
MAXIMUM WINDING TEMPERATURE	155 °C	AMBIENT TEMPERATURE RANGE:	-30 to 65 °C

AM-BL3260A/B COMBINATION SCHEME



Recommend Gearbox:
Planetary Gearbox:
AM-36P
AM-45P

Recommend Encoder:
Encoder S: AM-EN22-S***
2~3 Channels
Encoder T: AM-EN36-T***
2~3 Channels

For more gearbox specs, see Assun Motor website.

CONNECTION (AWG22#)

CABLE 1: WINDING A
CABLE 2: WINDING B
CABLE 3: WINDING C

PLUG DEFINITION
MOLEX: 51021 - 0500

PLUG 1: HALL V_{cc}
PLUG 2: HALL GND
PLUG 3: HALL A
PLUG 4: HALL B
PLUG 5: HALL C

TOTAL LENGTH (GEARBOX AND MOTOR): L_T=L₁+L₂+ L₃

	L1:36P	L1:45P	L2:BL36	L3:EN22-S	L3:EN36-T
CABLE 1: WINDING A					
CABLE 2: WINDING B	34.1	38.6	60.0	10.7	10.0
CABLE 3: WINDING C	42.7	49.4			12.0
PLUG DEFINITION	51.3	60.2			
MOLEX: 51021 - 0500	59.9	71.0			

REMARKS

Clients can choose gearbox and encoder to match with this motor. Some combinations are listed here for reference.

Motor Data Tested at 25°. Motor Operation exceeds continuous limits of operating range will compromise the life of the device.