

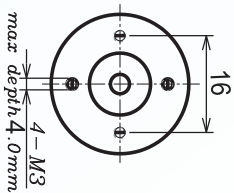
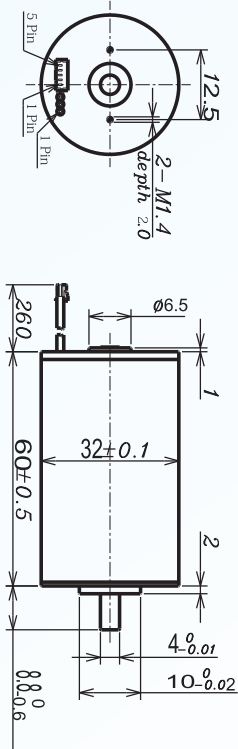
DC Brushless Motor AM-BL3260A/B Series

ASSUN MOTOR

2015 edition. Specifications are subject to change without notice.

BRUSHLESS MOTOR BALL BEARING

MOTOR MODEL		1212	1208	2413	2409	3613	3610
NOMINAL VOLTAGE	V	12	12	24	24	36	36
NO LOAD SPEED $\pm 12\%$	rpm	12191	8127	12832	9752	12611	10449
NO LOAD CURRENT Max 150%	mA	355	192	190	127	125	94
Recommend Limit for Continuous Operating	mN.m	31.44	42.41	28.75	34.62	29.30	36.39
	rpm	11450	7206	12178	8979	11934	9631
	A	3.70	3.20	1.80	1.60	1.20	1.2
	W	37.70	32.01	36.67	32.55	36.62	36.70
STARTING CURRENT	mA	60914	28235	35294	20168	22360	15319
STALL TORQUE	mN.m	573	398	630	474	610	504
MAXIMUM POWER OUTPUT	W	182.7	84.7	211.8	121.0	201.2	137.9
MAXIMUM EFFICIENCY	%	85	84	86	85	86	85
TERMINAL RESISTANCE PHASE TO PHASE $\pm 12\%$	Ω	0.2	0.43	0.68	1.19	1.61	2.35
MECHANICAL TIME CONSTANT	ms	2.97	2.84	2.84	2.87	2.88	2.89
MOMENT OF INERTIA	gcm ²	13.3	13.3	13.3	13.3	13.3	13.3
TORQUE CONSTANT	mN.m/A	9.4	14.1	17.86	23.5	27.26	32.9
SPEED CONSTANT	rpm/V	1016	677	53	406	350	290
SPEED/TORQUE GRADIENT	rpm/mN.m	21.3	20.4	20.4	20.6	20.7	207
WEIGHT	g	240	240	240	240	240	240

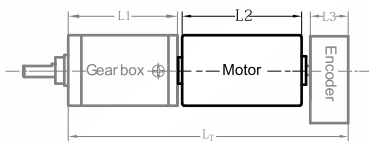


ADDITIONAL INFORMATION

MAXIMUM ROLLING BEARING LOADS

AXIAL (DYNAMIX)	6 N	RADIAL (5MM FROM HEAD FACE)	28 N
PRESS-FIT FORCE	110 N	L: MAX ALLOWABLE SCREW DEPTH INTO FLANGE	4.0 mm
MAXIMUM RADIAL PLAY	$\leq 0.02\text{mm}$	AXIAL PLAY:	0 (<6.0N)
MAXIMUM WINDING TEMPERATURE	85°C	AMBIENT TEMPERATURE RANGE:	-30 to 65°C

AM-BL3260A/B COMBINATION SCHEME



Recommend Gearbox:
Planetary Gearbox:
AM-36P
AM-45P

Recommend Encoder:
Encoder S: AM-EN22-S***
2~3 Channels
Encoder T: AM-EN36-T***
2~3 Channels

For more gearbox specs, see Assun Motor website.

CONNECTION (AWG22#)	TOTAL LENGTH (GEARBOX AND MOTOR): $L_T = L_1 + L_2 + L_3$				
	L1:36P	L1:45P	L2:BL36	L3:EN22-S	L3:EN36-T
CABLE 1: WINDING A					
CABLE 2: WINDING B	34.1	38.6	60.0	10.7	10.0
CABLE 3: WINDING C	42.7	49.4			12.0
PLUG DEFINATION MOLEX: 51021 - 0500	51.3	60.2			
	59.9	71.0			
PLUG 1: HALL V_{CC}					
PLUG 2: HALL GND					
PLUG 3: HALL A					
PLUG 4: HALL B					
PLUG 5: HALL C					

REMARKS

Clients can choose gearbox and encoder to match with this motor. Some combinations are listed here for reference.

Motor Data Tested at 25°. Motor Operation exceeds continuous limits of operating range will compromise the life of the device.