

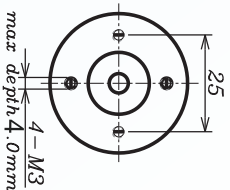
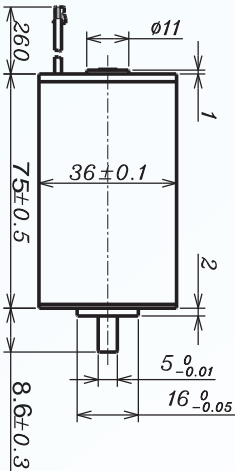
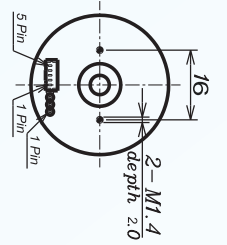


DC Brushless Motor AM-BL3675A/B-4P Series

ASSUN MOTOR

2015 edition. Specifications are subject to change without notice.

BRUSHLESS MOTOR BALL BEARING



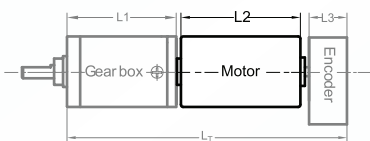
MOTOR MODEL		2408	2406	3609	3606	4808	4806
NOMINAL VOLTAGE	V	24	24	36	36	48	48
NO LOAD SPEED ±12%	rpm	8013	6128	9192	6250	8334	5953
NO LOAD CURRENT Max 150%	mA	454	338	339	225	227	169
Recommend Limit for	mN.m	187.22	211.76	174.32	207.63	185.52	2202.59
Continuous Operating	rpm	7452	5530	8694	5674	7815	5394
	A	7.00	6.00	5.00	4.00	3.6	2.8
	W	146.11	122.64	158.71	123.37	151.83	114.43
STARTING CURRENT	mA	100000	61538	92308	43373	57831	29814
STALL TORQUE	mN.m	2860	2302	3452	2386	3181	2296
MAXIMUM POWER OUTPUT	W	600.0	369.2	830.8	390.4	694.0	357.8
MAXIMUM EFFICIENCY	%	87	86	88	86	88	86
TERMINAL RESISTANCE PHASE TO PHASE ±12%	Ω	0.24	0.39	0.39	0.83	0.83	1.61
MECHANICAL TIME CONSTANT	ms	1.85	1.76	1.76	1.73	1.73	1.72
MOMENT OF INERTIA	gcm ²	63.21	63.21	63.21	63.21	63.21	63.21
TORQUE CONSTANT	mN.m/A	28.6	37.4	37.4	55	555	77
SPEED CONSTANT	rpm/V	334	255	255	174	174	12
SPEED/TORQUE GRADIENT	rpm/mN.m	2.8	2.7	2.7	2.6	2.6	2.6
WEIGHT	g	400	400	400	400	400	400

ADDITIONAL INFORMATION

MAXIMUM ROLLING BEARING LOADS

AXIAL (DYNAMIX)	6 N	RADIAL (5MM FROM HEAD FACE)	28 N
PRESS-FIT FORCE	110 N	L: MAX ALLOWABLE SCREW DEPTH INTO FLANGE	4.0 mm
MAXIMUM RADIAL PLAY	≤0.02mm	AXIAL PLAY:	0 (<6.0N)
MAXIMUM WINDING TEMPERATURE	155 °C	AMBIENT TEMPERATURE RANGE:	-30 to 65 °C

AM-BL3675A/B COMBINATION SCHEME



Recommend Gearbox:
Planetary Gearbox:
AM-36P
AM-45P

Recommend Encoder:
Encoder S: AM-EN22-S***
2~3 Channels
Encoder T: AM-EN36-T***
2~3 Channels

For more gearbox specs, see Assun Motor website.

CONNECTION (AWG22#)	TOTAL LENGTH (GEARBOX AND MOTOR): L _T =L ₁ +L ₂ + L ₃				
CABLE 1: WINDING A	L1:36P	L1:45P	L2:BL36	L3:EN22-S	L3:EN36-T
CABLE 2: WINDING B	34.1	38.6	75.0	10.7	10.0
CABLE 3: WINDING C	42.7	49.4			12.0
PLUG DEFINATION	51.3	60.2			
MOLEX: 51021 - 0500	59.9	71.0			
PLUG 1: HALL V _{cc}					
PLUG 2: HALL GND					
PLUG 3: HALL A					
PLUG 4: HALL B					
PLUG 5: HALL C					

REMARKS

Clients can choose gearbox and encoder to match with this motor. Some combinations are listed here for reference.

Motor Data Tested at 25°. Motor Operation exceeds continuous limits of operating range will compromise the life of the device.