



Planetary Gearbox AM-26P Series

ASSUN MOTOR

2017 edition. Specifications are subject to change without notice.

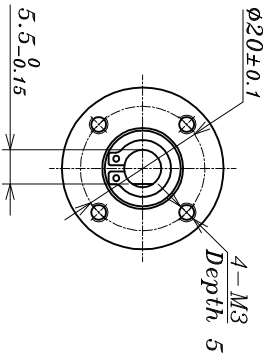
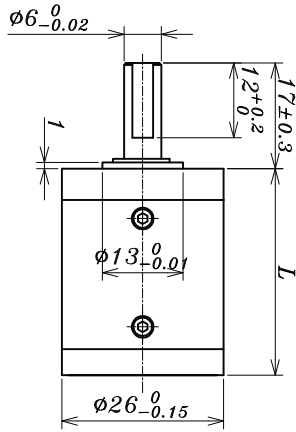
GEARBOX CHARACTER

GEAR TYPE	Straight teeth	AVERAGE BACKLASH NO LOAD	<2°
OUTPUT SHAFT	Stainless steel hardened	RADIAL PLAY	<0.1
MAIN GEAR	alloy steel	PERMISSIBLE AXIAL LOAD	<80N
RING GEAR	Steel	PERMISSIBLE FORCE FOR PRESS FITS	<150N[5mm from mounting face]
ADAPTER PLATE	Aluminium alloy	RECOMMENDED INPUT SPEED	<8000RPM
BEARING AT OUTPUT	Ball bearing	OPERATING TEMPERATURE RANGE	-20°C ~ +50°C
AXIAL PLAY	0-0.3	OPERATING HUMIDITY RANGE	10-90%RH
DIRECTIONS	CW/CCW		

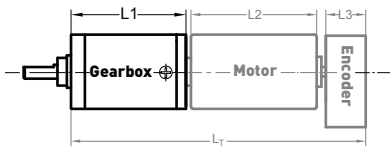
GEARBOX DATA

NUMBER OF STAGE	1				2				3				4																																																																																																																																																																																																																																																		
REDUCTION RATIO X:1	3.4	12	18	28	40	74	129	296	534	1016	3.8	13	19	29	45	85	152	327	637	1136		4.4	15	20	35	50	95	184	375	760	1304	5.3	17	23	44	56	106	233	405	860	1556		6.7	26	26	26	65	121	296	447	965	1975	REDUCTION RATIO ABSOLUTE	24/7	576/49	18/1	441/16	13824/343	189/2	85169/288	194481/256			23/6	92/7	484/25	88/3	2208/49	3381/32	122452/375	7744/9				22/5	529/36	16//18	35/1	1053/21	4851/40	234256/625	15435/16			21/4	253/15	231/10	400/9	12167/2	1936/15	25921/64	64000/63				20/3		230/9		5819/90	3200/21	53361/100	92000/81							5566/75	735/4	101871/160	35200/27								10648/125	700/3	14000/9	160000/81							8000/27						GEARBOX LENGTH "L" (mm)	26.9				33.2				39.5				45.8				RATED TORQUE (Kgf.cm)	13				17.5				21.5				26				BREAKING TORQUE (Kgf.cm)	40				53				65				78				GEARBOX EFFICIENCY	93%				86%				80%				75%				MOMENT OF INERTIA RANGE [g.cm ²]	1				0.9				0.6				0.6				GEARBOX WEIGHT APPROX (g)	65				85				105				120				GEARBOX MODEL	AM-26PA-X-01				AM-26PB-X-01				AM-26PC-X-01				AM-26PD-X-01			
	4.4	15	20	35	50	95	184	375	760	1304	5.3	17	23	44	56	106	233	405	860	1556		6.7	26	26	26	65	121	296	447	965	1975	REDUCTION RATIO ABSOLUTE	24/7	576/49	18/1	441/16	13824/343	189/2	85169/288	194481/256			23/6	92/7	484/25	88/3	2208/49	3381/32	122452/375	7744/9				22/5	529/36	16//18	35/1	1053/21	4851/40	234256/625	15435/16			21/4	253/15	231/10	400/9	12167/2	1936/15	25921/64	64000/63				20/3		230/9		5819/90	3200/21	53361/100	92000/81							5566/75	735/4	101871/160	35200/27								10648/125	700/3	14000/9	160000/81							8000/27						GEARBOX LENGTH "L" (mm)	26.9				33.2				39.5				45.8				RATED TORQUE (Kgf.cm)	13				17.5				21.5				26				BREAKING TORQUE (Kgf.cm)	40				53				65				78				GEARBOX EFFICIENCY	93%				86%				80%				75%				MOMENT OF INERTIA RANGE [g.cm ²]	1				0.9				0.6				0.6				GEARBOX WEIGHT APPROX (g)	65				85				105				120				GEARBOX MODEL	AM-26PA-X-01				AM-26PB-X-01				AM-26PC-X-01				AM-26PD-X-01																								
	6.7	26	26	26	65	121	296	447	965	1975	REDUCTION RATIO ABSOLUTE	24/7	576/49	18/1	441/16	13824/343	189/2	85169/288	194481/256			23/6	92/7	484/25	88/3	2208/49	3381/32	122452/375	7744/9				22/5	529/36	16//18	35/1	1053/21	4851/40	234256/625	15435/16			21/4	253/15	231/10	400/9	12167/2	1936/15	25921/64	64000/63				20/3		230/9		5819/90	3200/21	53361/100	92000/81							5566/75	735/4	101871/160	35200/27								10648/125	700/3	14000/9	160000/81							8000/27						GEARBOX LENGTH "L" (mm)	26.9				33.2				39.5				45.8				RATED TORQUE (Kgf.cm)	13				17.5				21.5				26				BREAKING TORQUE (Kgf.cm)	40				53				65				78				GEARBOX EFFICIENCY	93%				86%				80%				75%				MOMENT OF INERTIA RANGE [g.cm ²]	1				0.9				0.6				0.6				GEARBOX WEIGHT APPROX (g)	65				85				105				120				GEARBOX MODEL	AM-26PA-X-01				AM-26PB-X-01				AM-26PC-X-01				AM-26PD-X-01																																													
REDUCTION RATIO ABSOLUTE	24/7	576/49	18/1	441/16	13824/343	189/2	85169/288	194481/256			23/6	92/7	484/25	88/3	2208/49	3381/32	122452/375	7744/9				22/5	529/36	16//18	35/1	1053/21	4851/40	234256/625	15435/16			21/4	253/15	231/10	400/9	12167/2	1936/15	25921/64	64000/63				20/3		230/9		5819/90	3200/21	53361/100	92000/81							5566/75	735/4	101871/160	35200/27								10648/125	700/3	14000/9	160000/81							8000/27						GEARBOX LENGTH "L" (mm)	26.9				33.2				39.5				45.8				RATED TORQUE (Kgf.cm)	13				17.5				21.5				26				BREAKING TORQUE (Kgf.cm)	40				53				65				78				GEARBOX EFFICIENCY	93%				86%				80%				75%				MOMENT OF INERTIA RANGE [g.cm ²]	1				0.9				0.6				0.6				GEARBOX WEIGHT APPROX (g)	65				85				105				120				GEARBOX MODEL	AM-26PA-X-01				AM-26PB-X-01				AM-26PC-X-01				AM-26PD-X-01																																																								
	22/5	529/36	16//18	35/1	1053/21	4851/40	234256/625	15435/16			21/4	253/15	231/10	400/9	12167/2	1936/15	25921/64	64000/63				20/3		230/9		5819/90	3200/21	53361/100	92000/81							5566/75	735/4	101871/160	35200/27								10648/125	700/3	14000/9	160000/81							8000/27						GEARBOX LENGTH "L" (mm)	26.9				33.2				39.5				45.8				RATED TORQUE (Kgf.cm)	13				17.5				21.5				26				BREAKING TORQUE (Kgf.cm)	40				53				65				78				GEARBOX EFFICIENCY	93%				86%				80%				75%				MOMENT OF INERTIA RANGE [g.cm ²]	1				0.9				0.6				0.6				GEARBOX WEIGHT APPROX (g)	65				85				105				120				GEARBOX MODEL	AM-26PA-X-01				AM-26PB-X-01				AM-26PC-X-01				AM-26PD-X-01																																																																													
	20/3		230/9		5819/90	3200/21	53361/100	92000/81							5566/75	735/4	101871/160	35200/27								10648/125	700/3	14000/9	160000/81							8000/27						GEARBOX LENGTH "L" (mm)	26.9				33.2				39.5				45.8				RATED TORQUE (Kgf.cm)	13				17.5				21.5				26				BREAKING TORQUE (Kgf.cm)	40				53				65				78				GEARBOX EFFICIENCY	93%				86%				80%				75%				MOMENT OF INERTIA RANGE [g.cm ²]	1				0.9				0.6				0.6				GEARBOX WEIGHT APPROX (g)	65				85				105				120				GEARBOX MODEL	AM-26PA-X-01				AM-26PB-X-01				AM-26PC-X-01				AM-26PD-X-01																																																																																																		
					10648/125	700/3	14000/9	160000/81							8000/27						GEARBOX LENGTH "L" (mm)	26.9				33.2				39.5				45.8				RATED TORQUE (Kgf.cm)	13				17.5				21.5				26				BREAKING TORQUE (Kgf.cm)	40				53				65				78				GEARBOX EFFICIENCY	93%				86%				80%				75%				MOMENT OF INERTIA RANGE [g.cm ²]	1				0.9				0.6				0.6				GEARBOX WEIGHT APPROX (g)	65				85				105				120				GEARBOX MODEL	AM-26PA-X-01				AM-26PB-X-01				AM-26PC-X-01				AM-26PD-X-01																																																																																																																							
GEARBOX LENGTH "L" (mm)	26.9				33.2				39.5				45.8																																																																																																																																																																																																																																																		
RATED TORQUE (Kgf.cm)	13				17.5				21.5				26																																																																																																																																																																																																																																																		
BREAKING TORQUE (Kgf.cm)	40				53				65				78																																																																																																																																																																																																																																																		
GEARBOX EFFICIENCY	93%				86%				80%				75%																																																																																																																																																																																																																																																		
MOMENT OF INERTIA RANGE [g.cm ²]	1				0.9				0.6				0.6																																																																																																																																																																																																																																																		
GEARBOX WEIGHT APPROX (g)	65				85				105				120																																																																																																																																																																																																																																																		
GEARBOX MODEL	AM-26PA-X-01				AM-26PB-X-01				AM-26PC-X-01				AM-26PD-X-01																																																																																																																																																																																																																																																		

"X" Stand for RATIO



AM-26P EXAMPLE OF COMBINATION



Recommend Motor:
Coreless Motor (w/E):
AM-CL2532MA/B
AM-CL2545MA/B

Brushless Motor(w/E):
AM-BL2453A/B

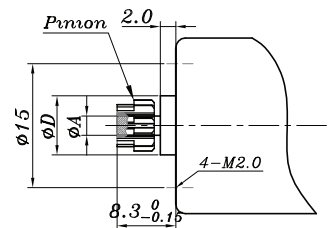
Recommend Encoder:
Suitable for Coreless Motor
Encoder S: AM-EN16-S***
2 ~3 Channels

Suitable for Brushless Motor
Encoder S: AM-EN16-S***
2 ~3 Channels
Encoder T: AM-EN24-T***
2 ~3 Channels

INPUT GEAR DATA

MODULUS	0.4				
PRESS ANGLE	20°				
TEETH NUMBER	9	12	15	18	21
MAX GEAR HOLE "A"	1.5	3.0	4.0		
MAX MOTOR SHAFT	1.5	3.0	4.0		
MOTOR DIMENSION "D"	10.0				

MOTOR DIMENSION



GEAR MOTOR LENGTH "LT"

GEAR MOTOR LENGTH Lt	70.9	89.5
GEARMOTOR LENGTH L1	26.9	33.2
MOTOR LENGTH L2	32	45
ENCODER LENGTH L3	12	11.3

For more motor and encoder specs, see Assun Motor website.

REMARKS

Clients can choose gearbox and encoder to match with this motor. Some combinations are listed here for reference.

Motor Data Tested at 25°.
Motor Operation exceeds continuous limits of operating range will compromise the life of the device.