



Planetary Gearbox AM-36P Series

ASSUN MOTOR

2017 edition. Specifications are subject to change without notice.

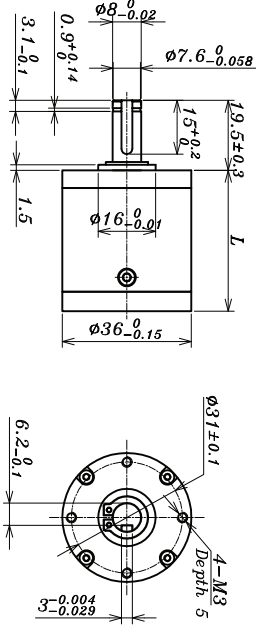
GEARBOX CHARACTER

GEAR TYPE	Straight teeth	AVERAGE BACKLASH NO LOAD	<2.5°
OUTPUT SHAFT	Stainless steel hardened	RADIAL PLAY	<0.06
MAIN GEAR	alloy steel	PERMISSIBLE AXIAL LOAD	<150N
RING GEAR	Steel	PERMISSIBLE FORCE FOR PRESS FITS	<240N(5mm from mounting face)
ADAPTER PLATE	Aluminium alloy	RECOMMENDED INPUT SPEED	<8000RPM
BEARING AT OUTPUT	Ball bearing	OPERATING TEMPERATRE RANGE	-20°C ~ +50°C
AXIAL PLAY	0~0.3	OPERATING HUMIDITY RANGE	10~90%RH
DIRECTIONS	CW/CCW		

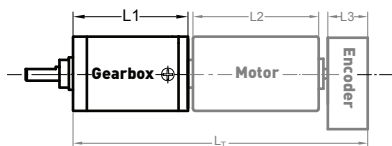
GEARBOX DATA

NUMBER OF STAGE	1	2	3		4					
REDUCTION RATIO X:1	3.4 3.8 4.3 5.1 6.3	12 13 14 16 19	22 26 32 40	40 44 50 66 75	83 98 111 131 150	162 171 202 232 257	224 255 283 322 358	399 421 446 513 570	649 738 824 948 1078	1270
REDUCTION RATIO ABSOLUTE	24/7 23/6 22/5 21/4 20/3	5625/484 2700/209 5184/361 621/38 4761/256	2277/104 4356/169 2079/65 3969/100	421875/10648 101250/2299 388125/7744 16200/247 15525/208 20493/247 313632/3211	75141/676 287496/2197 71441/475 137214/845 273861/1600 130977/650	607500/2717 1164375/4576 139725/494 1414017/3952 4499145/11264 1352538/3211 980100/2197	107163/209 5143824/9025 2464749/3800 18896409/25600 9056124/10985 2250423/2375 17253243/16000 8251551/6500			
GEARBOX LENGTH "L" (mm)	34.5	42.9		51.8			60			
RATED TORQUE (Kgf.cm)	27	36		45			54			
BREAKING TORQUE (Kgf.cm)	81	108		135			162			
GEARBOX EFFICIENCY	93%	86%		80%			75%			
MOMENT OF INERTIA RANGE (g.cm ²)	4.9	4.9		6.1			6.1			
GEARBOX WEIGHT APPROX (g)	162	208		288			323			
GEARBOX MODEL	AM-36PA-X-01	AM-36PB-X-01		AM-36PC-X-01			AM-36PD-X-01			

"X" Stand for RATIO



AM-36P EXAMPLE OF COMBINATION



Recommend Motor:
Coreless Motor (w/E)
AM-CL3570GA/B

Brushless Motor (w/E)
AM-BL3660A/B

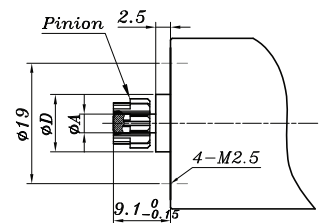
Recommend Encoder:
Suitable for Coreless Motor
Encoder S: AM-EN22-S***
2 ~ 3 Channels

Suitable for Brushless Motor
Encoder S: AM-EN22-S***
2 ~ 3 Channels
Encoder T: AM-EN36-T***
2 ~ 3 Channels

INPUT GEAR DATA

MODULUS	0.5
PRESS ANGLE	20°
TEETH NUMBER	10 13 16 19 22
MAX GEAR HOLE "A"	2.5 4.0 5.0 6.0
MAX MOTOR SHAFT	2.5 4.0 5.0 6.0
MOTOR DIMENSION "D"	13

MOTOR DIMENSION



GEAR MOTOR LENGTH "LT"

GEAR MOTOR LENGTH LT				
GEARMOTOR LENGTH L1	34.5	42.9	51.8	60
MOTOR LENGTH L2	70	60		
ENCODER LENGTH L3	12	10.7	10	

For more motor and encoder specs, see Assun Motor website.

REMARKS

Clients can choose gearbox and encoder to match with this motor. Some combinations are listed here for reference.

Motor Data Tested at 25°.
Motor Operation exceeds continuous limits of operating range will compromise the life of the device.