



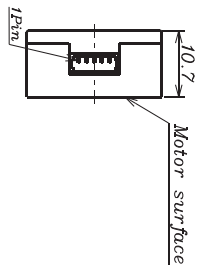
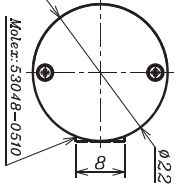
# Electromagnetic Encoder AM-EN22-S BL Series

**ASSUN MOTOR**

2015 edition. Specifications are subject to change without notice.

## PARAMETERS

PARAMETERS/MODELS	AM-EN22-S0032-003	AM-EN22-S0064-003	AM-EN22-S0128-003	AM-EN22-S0256-003	AM-EN22-S0512-003	AM-EN22-S1024-003
<b>PPR/TURN</b>	32	64	128	256	512	1024
<b>MAX CHANNELS</b>	3	3	3	3	3	3
<b>MAX WORKING FREQ. (KHz)</b>	20	40	100	180	360	512
<b>DRIVE</b> (Differential Output)	NO	NO	NO	NO	NO	NO

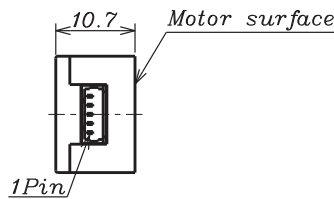


## INFORMATION

### TECHNICAL PARAMETERS

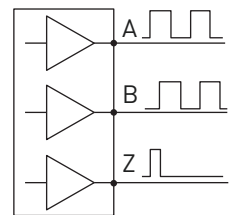
<b>POWER V<sub>CC</sub></b>	5V±5%
<b>V<sub>CC</sub>=5.0V SIGNAL</b>	TTL COMPATIBLE
<b>OPERATING TEMPERATURE</b>	-25~80°C
<b>INERTIA (Max)</b>	0.015g.cm <sup>2</sup>
<b>OUTPUT CURRENT, each channel</b>	1.5mA(max)

CONNECTOR: 53048-0510 (Molex)



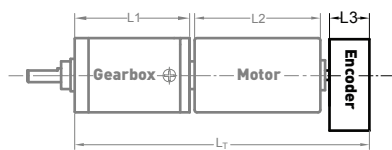
1. V<sub>CC</sub>
2. GND
3. CHANNEL A
4. CHANNEL B
5. CHANNEL Z 1/4T

### CONNECTION DIAGRAM



## RECOMMENDED COMBINATION

### AM-EN22-S\*\*\*\* COMBINATION SCHEME



**TOTAL LENGTH (GEARBOX AND MOTOR): L<sub>T</sub> = L<sub>1</sub> + L<sub>2</sub> + L<sub>3</sub> (=10.7mm)**

L1:36P	L1:45P	L2:BL36	L1:45P	L2:BL20
34.1	38.6	60.0	38.6	100.0
42.7	49.4		49.4	
51.3	60.2		60.2	
59.9	71.0		71.0	

Recommend Gearbox:  
Planetary Gearbox:  
AM-36P  
AM-45P

Recommend Motor:  
BRUSHLESS Motor:  
AM-BL36\*\*\*A/B  
AM-BL45\*\*\*A/B

For more motor and gearbox specs,  
see Assun Motor website.

Please tell us if there is vibration in application. Clients should pay attention to the integrity and reliability of the transmitted signal.

## REMARKS

Clients can choose gearbox and encoder to match with this motor. Some combinations are listed here for reference.

Motor Data Tested at 25°.  
Motor Operation exceeds continuous limits of operating range will compromise the life of the device.

**ASSUN MOTOR**

[www.assunmotor.com](http://www.assunmotor.com) | [info@assunmotor.com](mailto:info@assunmotor.com)