



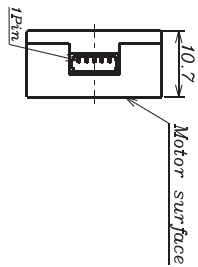
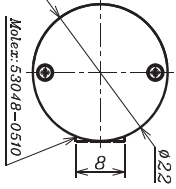
Electromagnetic Encoder AM-EN22-S cL Series

ASSUN MOTOR

2015 edition. Specifications are subject to change without notice.

PARAMETERS

PARAMETERS/MODELS	AM-EN22-S0032-003	AM-EN22-S0064-003	AM-EN22-S0128-003	AM-EN22-S0256-003	AM-EN22-S0512-003	AM-EN22-S1024-003
PPR/TURN	32	64	128	256	512	1024
MAX CHANNELS	3	3	3	3	3	3
MAX WORKING FREQ. (KHz)	20	40	100	180	360	512
DRIVE (Differential Output)	NO	NO	NO	NO	NO	NO

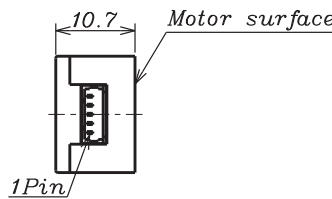


INFORMATION

TECHNICAL PARAMETERS

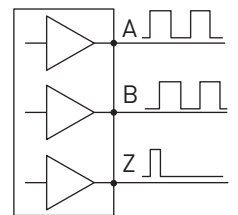
POWER V_{CC}	5V±5%
V_{CC}=5.0V SIGNAL	TTL COMPATIBLE
OPERATING TEMPERATURE	-25~80°C
INERTIA (Max)	0.015g.cm ²
OUTPUT CURRENT , each channel	1.5mA(max)

CONNECTOR: 53048-0510 (Molex)



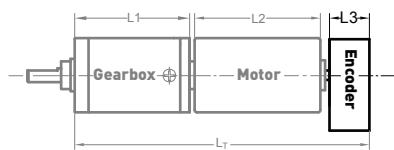
1. **V_{CC}**
2. **GND**
3. **CHANNEL A**
4. **CHANNEL B**
5. **CHANNEL Z** 1/4T

CONNECTION DIAGRAM



RECOMMENDED COMBINATION

AM-EN22-S**** COMBINATION SCHEME



Recommend Gearbox:
Planetary Gearbox:
AM-22P
AM-36P
AM-45P

Recommend Motor:
CORELESS Motor:
AM-CL22***A/B
AM-CL35***A/B

TOTAL LENGTH (GEARBOX AND MOTOR): $L_T = L_1 + L_2 + L_3 (=10.7mm)$

L1:22P	L2:CL22	L1:36P	L1:45P	L2:CL35
22.4	32.0	34.1	38.6	70.5
27.5	42.0	42.7	49.4	
32.5		51.3	60.2	
37.5		59.9	71.0	
42.6				

For more motor and gearbox specs, see Assun Motor website.

Please tell us if there is vibration in application. Clients should pay attention to the integrity and reliability of the transmitted signal.

REMARKS

Clients can choose gearbox and encoder to match with this motor. Some combinations are listed here for reference.

Motor Data Tested at 25°. Motor Operation exceeds continuous limits of operating range will compromise the life of the device.

ASSUN MOTOR

www.assunmotor.com | info@assunmotor.com